

# Keller Williams Elite, Realtors

## Piscataway Town Information

Piscataway was founded in 1666, and officially incorporated in 1798. The community, the fifth oldest municipality in New Jersey, has grown from Indian territory, through a colonial period and is one of the links in the earliest settlement of the Atlantic seacoast that ultimately led to the formation of the United States.

Piscataway, located in Middlesex County, comprises 19.1 square miles, is 35 miles from New York City, and within 250 miles of one-quarter of the nation's total population.



Though, despite the size and location, Piscataway maintains its small town feel while celebrating its diversity and maintaining its identity as a community. Atop a great deal of community events, including several town fairs and parades, Piscataway has a particular dedication to the youth of their community and the preservation of their natural beauty.

The National Recreation and Park Association is a national not-for-profit organization dedicated to advancing park, recreation and conservation efforts that enhance quality of life for all people. Through its network of more than 21,000 recreation and park professionals and citizens, NRPA encourages the promotion of healthy lifestyles, recreation initiatives, and conservation of natural and cultural resources.

The Piscataway Recreation Department was one of over 450 agencies from parks and recreation, schools, and independent youth associations that applied for the NRPA/USA Football Youth Football Grant in partnership with the National Recreation & Park Association (NRPA) and USA Football. Each applicant submitted detailed information concerning the state of youth football in their community in order to qualify for funding through this competitive process. Both tackle and flag programs were considered for support across the country. Piscataway Recreation received funding support for its Piscataway Braves Pop Warner Football Program in order to provide for new, state of the art football equipment. The Pop Warner Program involves 140 Piscataway youth football players every fall season.



126 agencies or organizations received funding totaling \$300,000.00 to enhance programs and create stability for the future of youth football at the grassroots level. Piscataway Recreation, one of only two recipients in the State of New Jersey, was awarded a grant in the amount of \$2,500.00.

In addition to recreation, Piscataway is also home to many Fortune 500 corporations including: Telcordia Technologies, Colgate Palmolive Technology Center, MCI World Com International, and Johnson & Johnson Health Systems, all located in the township; making Piscataway the ideal place to live, work, and play.

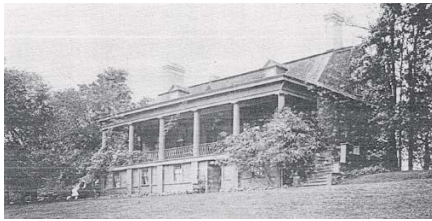


Deborah Kerr  
Keller Williams Elite, Realtors  
481 Memorial Parkway  
Metuchen, NJ 08840  
Office: (732) 549-1998  
Cell: (732) 910-1682  
E-Mail: debkerr@kw.com

# Keller Williams Elite, Realtors

## Historical Piscataway

Piscataway Township is a Township in Middlesex County, New Jersey. As of the United States 2000 Census, the township population was 50,482. But that was not always the case. Members of the Lenni Lenape of the Delaware Indians are seen as the original residents of the area now known as Middlesex County. The first Europeans did not arrive until many years later, in 1665, but soon became interested in the area, with space for trade, location and scenic landscape that made Piscataway ideal to settle, under the leadership of Lord Carteret. In order to promote development of the area and persuade buying a land in central New Jersey, Lord Carteret traveled to New England and promised generous land grants to those who relocated south to New Jersey, making land more affordable and encouraging land settlement and more appealing to build a home.



The name Piscataway stems from the area's original European settlers, transplants from near the Piscataqua River defining the coastal border between New Hampshire and Maine, whose name derives from Pisgeu (meaning "dark night") and awa ("Place of"). The area was first settled in 1666 by Quakers and Baptists who had left the Puritan colony in New Hampshire.

Piscataway Township was formed on December 18, 1666, and officially incorporated on February 21, 1798. The community, the fifth oldest municipality in New Jersey, has grown from Native American territory, through a colonial period and is one of the links in the earliest settlement of the Atlantic Ocean seacoast that ultimately led to the formation of the United States. Over the years, portions of Piscataway were taken to form Raritan Township (March 17, 1870, now Edison), Dunellen (October 28, 1887), Middlesex (April 9, 1913) and South Plainfield (March 10, 1926).



Though many settled due to the land enticement, the area remained a small farming village into the early 19th century, until the completion of the New Jersey Railroad stimulated commercial development and steady growth of the area. By 1870, Piscataway had developed into a hub of commerce and culture, with everything from churches and businesses to schools and even a literary and debating society were established. By the end of the decade, commerce had grown so much that the New Brunswick Directory listed a number of businesses in the Raritan Township Area.



Deborah Kerr  
Keller Williams Elite, Realtors  
481 Memorial Parkway  
Metuchen, NJ 08840  
Office: (732) 549-1998  
Cell: (732) 910-1682  
E-Mail: debkerr@kw.com

# Keller Williams Elite, Realtors

## Piscataway Location and Transportation

Piscataway is strategically situated within Middlesex County, making the Piscataway a smart move with a simple commute to New York City. Piscataway is located less than two miles from a number of the state's major arteries, which include the New Jersey Turnpike, the Garden State Parkway, Interstate 287, U.S. Highway 1 and State Highway 27, making Metuchen a strategic placement for all major highways in New Jersey.



From Piscataway, Manhattan can be reached within a mere 25 miles southwest making it a simple ride to be in the heart of the greatest city in the world. What's more, aside from driving, it is an easy commute to bustling New York City by train or bus, or to Newark, Trenton or nearby Rutgers University in New Brunswick from any of the New Jersey Transit stops in Piscataway.



The transit station, less than two miles from any one of the homes in Piscataway, serves as a connection point for many local New Jersey Transit bus routes, making Piscataway the perfect placement for easy transportation.

These routes provide a connection between Piscataway and Fords, Plainfield, Perth Amboy, Raritan, Metuchen, Edison and any number of locations with relative ease. In Piscataway, if one does not care to walk, convenient parking and other amenities are offered for those utilizing the train station as well. Also, just a mere 15 miles from Piscataway, air transportation is readily available to travelers through Newark International Airport, also easily reached through a direct train route through New Jersey Transit. Allowing anyone to travel from their home in Piscataway to anywhere in the world, creating a new advantage to Piscataway. Walking is another option for Piscataway residents.

UMDNJ-Robert Wood Johnson Medical School, and 189 buildings on the Busch and Livingston campuses of Rutgers, the State University are located in Piscataway.

Since the opening in 1960 of Interstate Highway 287 the township has proven a highly desirable location for suburban development. The township's prime location with its easy access to the New Jersey Turnpike, the Garden State Parkway, Routes 287, 78, 22, 27, and 18 make it especially attractive to commuters and corporations alike. Despite the development Piscataway has managed to maintain its friendly welcoming atmosphere



Deborah Kerr  
Keller Williams Elite, Realtors  
481 Memorial Parkway  
Metuchen, NJ 08840  
Office: (732)549-1998  
Cell: (732) 910-1682  
E-Mail: debkerr@kw.com